

- SPORT BODY
- BILLET ALUMINUM
- UTILITY BODY
- SEATS & GRAPHICS
- CONTROL
- FUEL & AIR
- ELECTRICAL
- TIRES
- TIRE/WHEEL KITS
- WHEELS
- BRAKE
- BELTS, CHAINS & SPROCKETS
- DRIVE
- SUSPENSION
- BEARINGS
- EXHAUST
- HARD & SOFT LUGGAGE
- HUNTING
- AG & FARMING
- PLOW
- WINCH
- UTV
- ENGINE
- GENERAL ACCESSORIES
- RAMPS & TIEDOWNS
- CHEMICAL
- TOOLS & SUPPLIES
- DISPLAY & PROMO
- CROSS REFERENCE

QUADBOSS TRAILERS CUSTOM PALLET PROGRAM

- Build a custom pallet with 5 trailers to choose from: **56-6752, 56-6753, 56-6775, 56-6757, 56-6754, 56-6756** and **56-6774**
- Must order a minimum of 4 to a maximum of 6 trailers per custom pallet (more than 6 will ship on multiple pallets and need to be in multiples of 4, 5 or 6)
- Mix any style or order 1 style, to customize your needs
- Drop ships from manufacturer
- Must fill out custom trailer pallet order form
- See your Tucker Rocky Sales Rep. for details



QUADBOSS ECONOMY DUMP TRAILER

- 12 cu. ft. heaped capacity
- 1,000 lb. load capacity
- Durable 18 gauge bolt together cart body
- Powder-coated for long life
- Heavy-duty 14 gauge steel undercarriage and drawbar
- 16" Turf Saver tires with 3/4" roller bearings (16/6.50-8)
- 3/4" axle
- Length 71.08", width 32.38", height 29.20"
- Removable Tailgate
- Hitch Pin included
- 1 year limited warranty



Description	P/N	Retail
Single Trailer	56-6750	\$318.99
Pallet	56-6752	318.99

QUADBOSS HEAVY-DUTY DUMP TRAILER

- 12 cu. ft. heaped capacity
- 1,000 lb. load capacity
- Durable 18 gauge welded cart body
- Powder-coated for long life
- Heavy-duty 11 gauge steel undercarriage and drawbar
- 18x9.5x8 ATV wheels with roller bearings
- 1" heavy-duty axle
- Length 70.16", width 38.85", height 34.26"
- Removable Tailgate
- Hitch Pin included
- 1 year limited warranty



Description	P/N	Retail
Single Trailer	56-6771	\$439.99
Pallet	56-6753	439.99

QUADBOSS LARGE HEAVY-DUTY DUMP TRAILER

- 20 cu. ft. heaped capacity
- 1,500 lb. load capacity
- Durable 16 gauge welded cart body
- Powder-coated for long life
- Heavy-duty 11 gauge steel undercarriage and drawbar
- 18x9.5x8 ATV wheels with roller bearings
- Length 76.26", width 46.77", height 31.12"
- 1" heavy-duty axle
- Removable Tailgate
- Hitch Pin included
- 1 year limited warranty

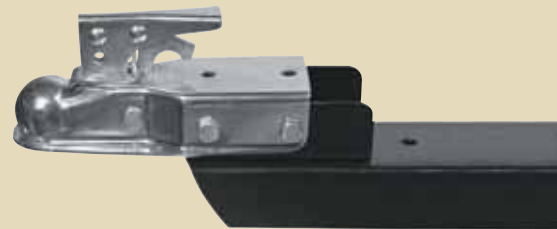


Description	P/N	Retail
Single Trailer	56-6770	\$494.99
Pallet	56-6755	494.99

QuadBoss Custom Pallet Program continued on next page.

QUADBOSS HITCH CONVERSION KIT

- Converts QuadBoss ATV carts from pin hitch to a ball hitch
- Comes complete with necessary hardware to bolt to cart drawbar
- Drilling may be necessary to fit other brands of carts
- Fits 1-7/8" trailer ball (coupler included)
- 1-year limited warranty



Description	P/N	Retail
Hitch Conversion Kit	56-6757	\$40.99

QUADBOSS TRAILER & DUMP CARTS

QUADBOSS ULTIMATE POLY DUMP CART

- 12.5 cu. ft. heaped capacity
- 1,000 lb. load capacity
- Structural foam cart body will not rust
- Molded in features (accessories not included): stake pockets, tie down bars, slots for load dividers, 2x4 cross member slots, ledge for adding shelf and holes on top for future attachments
- Steel parts are powder-coated for long life
- Heavy-duty 11 gauge steel undercarriage and drawbar
- Length 67.45", width 47.32", height 33.11"
- 18x9.50x8 ATV wheels with roller bearings
- 1" axle
- Sloped back for easy dumping
- Hitch Kit included (P/N 56-6757)
- 1 year limited warranty

Description	P/N	Retail
Single Trailer	56-6772	\$413.99
Pallet	56-6754	413.99



Dividers and Side Panels not included

QUADBOSS FLATBED DUMP TRAILER

- Expanded steel bed with stake pockets for adding side panels
- 1000 lb. load capacity
- Powder-coated for long life
- Heavy-duty 11 gauge steel undercarriage and drawbar
- Length 77.60", width 45.40", height 22.37"
- 18x9.5x8 ATV wheels with roller bearings
- 1" Heavy-duty axle
- Hitch pin included
- 1 year limited warranty

Description	P/N	Retail
Single Trailer	56-6773	\$385.99
Pallet	56-6756	385.99



QuadBoss Custom Pallet Program continued from previous page.

QUADBOSS SWIVEL DUMP CART

- 12.5 cu. ft. heaped capacity
- 1,250 lb. load capacity
- Structural foam cart body will not rust
- Pass-through undercarriage provides a full 12" of ground clearance
- Pivoting hitch allows cart to adjust to uneven terrain
- Full 60° dump angle
- Cart body swivels to easily dump load anywhere within a 100° radius
- Length 76.26", width 46.77", height 31.12"
- Works with a 1-7/8" ball, 2" ball or also works as a pin hitch
- Foot pedal activates dump mechanism
- ATV/UTV/Tractor compatible

Description	P/N	Retail
Single Cart	56-6775	\$419.99
Pallet	56-6774	419.99



- SPORT BODY
- BILLET ALUMINUM
- UTILITY BODY
- SEATS & GRAPHICS
- CONTROL
- FUEL & AIR
- ELECTRICAL
- TIRES
- TIRE/WHEEL KITS
- WHEELS
- BRAKE
- BELTS, CHAINS & SPROCKETS
- DRIVE
- SUSPENSION
- BEARINGS
- EXHAUST
- HARD & SOFT LUGGAGE
- HUNTING
- AG & FARMING
- PLOW
- WINCH
- UTV
- ENGINE
- GENERAL ACCESSORIES
- RAMPS & TIEDOWNS
- CHEMICAL
- TOOLS & SUPPLIES
- DISPLAY & PROMO
- CROSS REFERENCE

- SPORT BODY
- BILLET ALUMINUM
- UTILITY BODY
- SEATS & GRAPHICS
- CONTROL
- FUEL & AIR
- ELECTRICAL
- TIRES
- TIRE/WHEEL KITS
- WHEELS
- BRAKE
- BELTS, CHAINS & SPROCKETS
- DRIVE
- SUSPENSION
- BEARINGS
- EXHAUST
- HARD & SOFT LUGGAGE
- HUNTING
- AG & FARMING
- PLOW
- WINCH
- UTV
- ENGINE
- GENERAL ACCESSORIES
- RAMPS & TIEDOWNS
- CHEMICAL
- TOOLS & SUPPLIES
- DISPLAY & PROMO
- CROSS REFERENCE



55-9931

55-9897

SWISHER

SWISHER POLY DUMP CART PLUS TRAILER

- 16 cu. ft. tire size 18 x 9.5-8
- 20 cu. ft. tire size 18 x 9.5-8
- High speed sealed precision ball bearings
- Dump trailer
- 2" ball hitch coupler
- 16 cu. ft. measures 42" x 54" x 12" 750 lb. max load
- 20 cu. ft. measures 48" x 60" x 14" 1000 lb. max load

Description	P/N	Retail
16 cu. ft.	55-9931	\$474.99
20 cu. ft.	55-9897	629.99



KOLPIN
ALL-TERRAIN INNOVATION

KOLPIN® POLY DUMP CART

- Changes between a push cart and tow cart in seconds
- 1-piece, poly bed is quiet, resists rust, cleans up quickly and lasts for years
- 500 lb./10 cu. ft. load capacity for larger jobs
- Overall size: 41"L x 30.5"W x 11"H
- Axle: 5/8" diameter
- 16" pneumatic offroad tires for easy maneuverability over rough terrain
- Drop shipped only

37-5134 \$344.99



15-0745

15-0746

ALL RITE PRODUCTS SNAP IN GO™ ATV TOOL HOLDER

- Tool handles 1-1/4" diameter, wood and fiberglass
- The vertical can rotate 360°
- Just snap in and go

Description	P/N	Retail
Standard	15-0745	\$17.99
Vertical	15-0746	19.99



ALL RITE PRODUCTS RACK RIDER™ STRIKING TOOL HOLDER

- Carries hammers, hand sledges, axes and other tools
- Durable steel construction, built to last
- Easy to attach and remove with 2 rubber grommets to keep tool in place

15-0744 \$24.99

KOLPIN® SAW BOOT



- Secure and protect your chain saw when traversing over rough terrain
- Fits in standard Kolpin® Gun Boot brackets, simply remove your Gun Boot case and install your Saw Boot
- Designed to be used with Universal Gun Boot IV Bracket (57-8415 sold separately) or Bootector Bracket 56-0665
- Saw can be quickly secured or removed with a bungee tiedown
- Included heat shielding allows for carrying a hot saw
- Universal fit for most ATV racks

57-8552 \$57.99



ALL RITE PRODUCTS BUCKET BINDER™ ATV BUCKET HOLDER

- Great for carrying water or doing work around the property
- High strength nylon straps adjust to firmly hold 4 and 5 gallon buckets as well as water jugs or weed/garden sprayers

15-0742 \$30.99



GREAT DAY INC. HITCH-N-RIDE DRY HAUL **NEW**

- New look for hitch receiver cargo carriers: more haul capacity, protection from rain, moisture and dust
- Store clothes, supplies or serve as a temporary ice chest and features a lockable cover
- Aircraft aluminum construction provides 400 lbs. of carrying capacity
- Dry Haul storage case fits inside the Magnum Hitch-N-Ride rack but can be removed and serve as a portable storage, just grab the handles and go
- Includes Magnum Hitch-N-Ride rack (50" L x 22" W x 12" H) and Dry Haul storage case (48" L x 22" W x 11" H)
- Shipping weight: 42 lbs. and ships by UPS
- Fits any 2" receiver
- Recommended using with Hitch-N-Ride Stabilizer P/N 40-3492

40-3509 \$399.00

GREAT DAY INC. HITCH-N-RIDE STABILIZER

- Helps stop the rattling and swaying caused from loose hitch receiver
- Easy to install, just slips over the trailer hitch, and tighten screws
- 2 stabilizing 3/8" screws applying vertical and horizontal pressure on the hitch
- Constructed of high-carbon steel
- Recommend using with the Hitch-N-Ride (P/N 40-3509 & 40-3492)
- Made in the USA

40-3493 \$33.00



GREAT DAY INC. THE POWER LOADER™

- Extends the loading basket all the way to ground level to make loading possible without any lifting
- Retracts as it is loading to reduce the leverage factor to a functional level
- Here are some of the recommended uses for work or play:
- Loading and transporting deer or other game
- Loading and transporting any recreational equipment that does not exceed the 250 lb. weight limit—ice chests, camping equipment, tree stands, etc.
- Lifting miscellaneous objects within the weight limit to a working height or to be transported—toolboxes, light equipment, sacks of feed, seed or fertilizer, bales of hay, firewood, etc.

40-3473 \$330.99

Mounting Kits

Brackets for Polaris 4 wheeler or other brands with composite front rack

40-3474 \$45.99

Brackets for UTVs

40-3472 \$84.99

Brackets for Arctic Cat Prowler

40-3487 \$99.99

Brackets for John Deere

40-3499 \$84.99



GREAT DAY INC. ATV/UTV HITCH-N-RIDE

- Adds a new dimension of packing capacity to any ATV/UTV vehicle with a 2" hitch receiver
- Perfect for hauling hunting equipment, cooler, firewood and wild game
- The "Z-bar" attachment bar, allows clearance for traveling over rugged and uneven terrain
- Constructed of aircraft aluminum, weighs only 22 lbs. and can handle up to 400 lbs.
- Low center of gravity, loading and unloading the Hitch-N-Ride eliminates a lot of backbreaking stress and strain
- 22" x 50" x 6" carrying cradle provides lots of tiedown
- Made in USA
- Recommend using with the Hitch-N-Ride Stabilizer (P/N 40-3493)

40-3492 \$190.99

SPORT BODY

BILLET ALUMINUM

UTILITY BODY

SEATS & GRAPHICS

CONTROL

FUEL & AIR

ELECTRICAL

TIRES

TIRE/WHEEL KITS

WHEELS

BRAKE

BELTS, CHAINS & SPROCKETS

DRIVE

SUSPENSION

BEARINGS

EXHAUST

HARD & SOFT LUGGAGE

HUNTING

AG & FARMING

PLOW

WINCH

UTV

ENGINE

GENERAL ACCESSORIES

RAMPS & TIEDOWNS

CHEMICAL

TOOLS & SUPPLIES

DISPLAY & PROMO

CROSS REFERENCE

891



QUADBOSS 44" FINISH CUT MOWER

- Designed to dramatically reduce mowing time
- Easily attaches to any ATV (must have trailer hitch) and is the ultimate time saver for large lawns
- 44" cutting width produces a finish cut (lawn quality) and has a single point height adjustment and anti-scalp rollers
- Height adjusts from 1.5" to 4.5"
- Can be pulled directly behind ATV or offset to either left or right side for mowing where the ATV can't travel
- Wide tires offer excellent floatation and Swisher exclusive side bumper roller system protects against damage to trees and shrubs
- Deck is manufactured with 11 gauge steel
- Will not start without key inserted
- Rear discharge



Rough Cut Mower shown



Blade Brake



Safety Switch



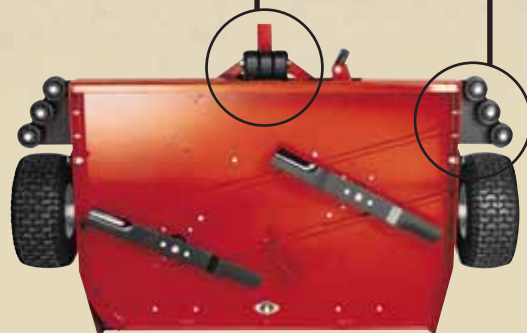
Height Adjuster



Anti-Scalp Rollers



Side Rollers



Under Side Dual Blades

Description	P/N	Retail
44" Finish Cut with 11.5 hp Briggs & Stratton Motor Recoil Start	55-9910 ³	\$1199.99
44" Finish Cut with 12.5HP Briggs & Stratton Motor, 12V Electric Start	55-9912 ^{1,2,3}	1425.99
Blade - Includes 1 blade (2 required per mower)	55-9996	22.99
Belt - sold individually	55-9995	28.99
Idler pulley - sold individually	55-9989	14.99

¹ Does not include battery, Order P/N 58-1050

² Can be started without electric start

³ Not available for sale in California. Not C.A.R.B. compliant



Articulated Arm

Hitch



- SPORT BODY
- BILLET ALUMINUM
- UTILITY BODY
- SEATS & GRAPHICS
- CONTROL
- FUEL & AIR
- ELECTRICAL
- TIRES
- TIRE/WHEEL KITS
- WHEELS
- BRAKE
- BELTS, CHAINS & SPROCKETS
- DRIVE
- SUSPENSION
- BEARINGS
- EXHAUST
- HARD & SOFT LUGGAGE
- HUNTING
- AG & FARMING
- PLOW
- WINCH
- UTV
- ENGINE
- GENERAL ACCESSORIES
- RAMPS & TIEDOWNS
- CHEMICAL
- TOOLS & SUPPLIES
- DISPLAY & PROMO
- CROSS REFERENCE

QUADBOSS MOWERS



Under Deck



Side Bumper



Key Presence Lock-Out System



Remote Blade Brake

QUADBOSS ROUGH CUT MOWER

- Designed to dramatically reduce mowing time
- Easily attaches to any ATV (must have trailer hitch) and is the ultimate time saver for mowing ditches, fence lines and fields
- 44" cutting width will cut most tree stems up to 2" in diameter and has a single point height adjustment
- Height adjusts from 2.5" to 7" - varies by model
- Can be pulled directly behind ATV or offset to either left or right side for mowing where the ATV can't travel
- Includes remote engagement blade brake with lock-out system
- Deck is manufactured with 11-gauge steel
- Will not start without key inserted
- Dual swinging blades
- Rear discharge chute
- Two 16" wheels treated with sealant



55-9934
44" Shown



Hitch

Description

Description	P/N	Retail
44" 12.5HP Briggs & Stratton Motor Recoil Start	55-9934 ³	\$1969.99
44" Rough Cut with 14.5HP Briggs & Stratton Motor, 12V Electric Start	55-9915 ^{1,2,3}	2299.99
52" Rough Cut with 18.5HP Briggs & Stratton Motor 12V Electric Start	55-9938 ^{1,3,4}	2589.99
Blade - sold individually (2 required per mower) 2005 models	55-9940	29.99
Belt - sold individually	55-9990	22.99
Idle pulley - sold individually	55-9989	14.99

¹ Does not include battery. Order P/N 58-1050 ² Can be started without electric start
³ Not available for sale in California. Not C.A.R.B. compliant ⁴ Deck supported by 4 wheels



Blades



Offset Mowing Arm



Blade Brake



Height Adjuster

QUADBOSS FINISH CUT MOWER

- Side discharge, true floating deck
- Reduces scalping and also offsets to mow on either side
- Triple blade for a manicured cut
- Deck is manufactured with 11 gauge steel
- Height adjusts from 1.5" to 4.5"
- Guaranteed height select which matches the exact cutting height of your rider
- Key presence lock-out system



Side Discharge

Anti-Scalp Rollers

Description

Description	P/N	Retail
60" Finish Cut with 14.5HP Briggs & Stratton I/C, Electric Start	55-9913 ^{1,2,3}	\$2039.99
66" Finish Cut with 20HP Briggs & Stratton Motor Electric Start	55-9937 ^{1,3}	2674.99
Blade - Includes 1 blade - sold individually (3 required per mower)	55-9994	20.99
Belt - sold individually (pulley to blade) - 60"	55-9993	41.99
Belt - sold individually (pulley to blade) - 66"	55-9900	37.99
Belt - sold individually (engine shaft to pulley) - 60"	55-9992	17.99
Belt - sold individually (engine shaft to pulley) - 66"	55-9990	22.99
Idle pulley - sold individually	55-9989	14.99

¹ Does not include battery. Order P/N 58-1050

² Can be started without electric start

³ Not available for sale in California. Not C.A.R.B. compliant

Mower Displays ON PAGE **1293**

- SPORT BODY
- BILLET ALUMINUM
- UTILITY BODY
- SEATS & GRAPHICS
- CONTROL
- FUEL & AIR
- ELECTRICAL
- TIRES
- TIRE/WHEEL KITS
- WHEELS
- BRAKE
- BELTS, CHAINS & SPROCKETS
- DRIVE
- SUSPENSION
- BEARINGS
- EXHAUST
- HARD & SOFT LUGGAGE
- HUNTING
- AG & FARMING
- PLOW
- WINCH
- UTV
- ENGINE
- GENERAL ACCESSORIES
- RAMPS & TIEDOWNS
- CHEMICAL
- TOOLS & SUPPLIES
- DISPLAY & PROMO
- CROSS REFERENCE

- SPORT BODY
- BILLET ALUMINUM
- UTILITY BODY
- SEATS & GRAPHICS
- CONTROL
- FUEL & AIR
- ELECTRICAL
- TIRES

SWISHER POST MASTER

- 8.75 Gross Torque HP Briggs Debris Shield Engine
- Pivoting deck
- Adjustable mowing tension
- 22" cutting head
- Unique transport position
- Powder-coated paint
- 360° guarded cutting shield
- 5 position offset hitch
- Adjustable trimming to either side
- Adjustable trimmer height with radial tapered wheels
- Full floating head
- Designed to pull behind ATV or Lawn Tractor to trim around fence posts, trees and other obstacles
- It will save you hours of time trimming long fence lines
- Dimensions: 61" x 37" x 25" - weight is 245 lbs.

55-9959 \$899.99



- TIRE/WHEEL KITS
- WHEELS
- BRAKE
- BELTS, CHAINS & SPROCKETS
- DRIVE
- SUSPENSION
- BEARINGS
- EXHAUST
- HARD & SOFT LUGGAGE



SWISHER LAWN VAC

- 8.75 Gross Torque HP Briggs Engine
- 37 cubic foot bag capacity
- Easy on/off collector bag which requires no tools
- Bag folds for easy storage
- 11.7 cubic foot trailer
- Converts into heavy-duty dump cart
- 500 lb. capacity
- Removable engine for easy handling
- 180 mph high velocity pump
- 1-year limited manufacturer's warranty
- Dimension: 46" x 38" x 54" - Weight is 434 lbs.

55-9958 \$1599.99



- HUNTING
- AG & FARMING
- PLOW
- WINCH
- UTV
- ENGINE
- GENERAL ACCESSORIES
- RAMPS & TIEDOWNS
- CHEMICAL
- TOOLS & SUPPLIES
- DISPLAY & PROMO
- CROSS REFERENCE



WARN® ProVantage™ BUCKET CONVERSION KIT

- Turn your ProVantage™ plow blade into a powerful and versatile bucket loader with this easy-to-install conversion kit
- With a 200 lb. capacity, the ability to move up to 5 cu. ft. of material and a 60° dump angle, you'll be able to get more done in less time.
- Durable unit is made from sturdy 14 gauge steel with added reinforcement.
- It's easy to use: The dump release is operable from the driver's seat and when you lower the bucket, it automatically resets to the ready position

Description	P/N	Retail
50" Bucket Conversion Kit	37-4342	\$244.00
54" Bucket Conversion Kit	37-4343	244.00
60" Bucket Conversion Kit	37-4344	274.00

See Plow Section for ProVantage™ Plows and Mounting Kits ON PAGE **917**



WARN® BUCKET/PLOW LIMIT CONTROL

- Extends bucket/plow system life
- Protects vehicle from impact and stops over raised conditions
- Easy retro fit allows fine tuning of bucket/plow system for a variety of stop positions
- ATV only

37-4414 \$69.00



WARN® BUCKET SLACK CONTROL

- Extend life of bucket system and winch rope
- Eliminate winch over run when lowering bucket
- Corrects cable tangles
- ATV only

37-4413 \$79.00



SWISHER IMPLEMENT SYSTEMS FOR ATVs



SWISHER QUICKSWITCH IMPLEMENT SYSTEM FOR ATVS

- All you need is a mount, implement and lifting system
 - Universal mounting kit accepts all 3 implements
 - All implements are universal
 - Drop Shipped - item will ship directly from the manufacturer
- Note: Nothing in this system will interchange with any other brand of plow system

UNIVERSAL ATV MOUNT KIT

- Fits most ATVs (trailer hitch required)
- Innovative leaf spring design eliminates front end drop when implement is raised
- Enables you to easily switch the plow, bucket and pallet lifter
- ATV must have a rear hitch bracket
- Distance from the center of the hole in the hitch bracket to the front of the front tires must be at least 61", but cannot exceed 73"
- Maximum length of the assembled accessory mount from the hitch point to the mounting hole in the yoke is 75". Minimum length is 63"
- Maximum distance between spring clevis brackets is 32", assuming 4" overlap of springs
- Minimum recommended ATV = 300CC

SWISHER WORK DUTY PLOW

- 50" blade made from 1/8" steel
- Heavy duty construction
- Unique "dual engage" angle selection system
- Universal fitment
- 50" wide with 18" lift height
- Replaceable wear bar and adjustable skids
- No tool installation
- Winch or manual lift required

Description	P/N	Retail
50" Work Duty Plow Blade-Rolled (drop-shipped)	55-9926	\$474.99

ATV UNIVERSAL DUMP BUCKET

- Universal fitment
- 44" wide with an 18" lift height
- Quick-release dump engagement
- No-tool installation
- Winch required, 250lb lift capacity
- Optional teeth available

ATV UNIVERSAL MANUAL LIFT

- Designed for use in place of winch lifting mechanism for lifting plow blade only

Description	P/N	Retail
Universal Mount Kit (drop-shipped)	55-9950	\$169.99
Universal Dump Bucket (drop-shipped)	55-9952	474.99
Optional Bucket Teeth	55-9866	62.99
All extended wheel base ATVs (drop-shipped)	55-9918 ¹	48.99
Universal Manual Lift (drop-shipped)	55-9954	129.99
50" Work Duty Plow Blade-Rolled Blade (drop-shipped)	55-9926	474.99

¹ Required mounts to be used in conjunction with P/N 55-9950



- SPORT BODY
- BILLET ALUMINUM
- UTILITY BODY
- SEATS & GRAPHICS
- CONTROL
- FUEL & AIR
- ELECTRICAL
- TIRES
- TIRE/WHEEL KITS
- WHEELS
- BRAKE
- BELTS, CHAINS & SPROCKETS
- DRIVE
- SUSPENSION
- BEARINGS
- EXHAUST
- HARD & SOFT LUGGAGE
- HUNTING
- AG & FARMING
- PLOW
- WINCH
- UTV
- ENGINE
- GENERAL ACCESSORIES
- RAMPS & TIEDOWNS
- CHEMICAL
- TOOLS & SUPPLIES
- DISPLAY & PROMO
- CROSS REFERENCE

- SPORT BODY
- BILLET ALUMINUM
- UTILITY BODY
- SEATS & GRAPHICS
- CONTROL
- FUEL & AIR
- ELECTRICAL
- TIRES
- TIRE/WHEEL KITS
- WHEELS
- BRAKE
- BELTS, CHAINS & SPROCKETS
- DRIVE
- SUSPENSION
- BEARINGS
- EXHAUST
- HARD & SOFT LUGGAGE
- HUNTING
- AG & FARMING
- PLOW
- WINCH
- UTV
- ENGINE
- GENERAL ACCESSORIES
- RAMPS & TIEDOWNS
- CHEMICAL
- TOOLS & SUPPLIES
- DISPLAY & PROMO
- CROSS REFERENCE

Swisher's unique leaf spring design takes the weight off the front suspension, providing unmatched maneuverability and stability while carrying heavy loads.

Pushing and pulling forces are transferred to the hitch for greater stability



Slots in the channel allow mount to fit any length of ATV

Mounting kit detaches easily, eliminating ground clearance concerns.



Cable from front winch can be used to raise and lower the front and rear attachments. Simply route the winch cable directly to the front attachment, or around the front pulleys, following the universal mounting system to the rear pulleys.

SWISHER REAR QUICKSWITCH SYSTEM

- All you need is a mount and implement
 - Universal mounting kit accepts all 3 implements
 - All implements are universal
- Note: Nothing in this system will interchange with any other brand of plow system



55-9895



55-9892

REAR SCRAPER BLADE

- Works great for grading, leveling and plowing
- Blade can be angled in 5 positions
- Heavy-duty 14 gauge steel
- Powder-coat paint finish provides long-lasting durability

REAR SCRAPER BOX BLADE WITH SCARIFIERS



55-9894

REAR DISC ATTACHMENT

- 6 discs easily break up dirt clumps and cultivate soil
- Powder-coat paint finish provides long-lasting durability

Description	P/N	Retail
Universal Quick Switch Rear Complete	55-9890	\$529.99
Quick Switch Rear Add On Kit	55-9891 ¹	379.99
Rear Scraper Box Blade with Scarifiers	55-9892	299.99
Rear Box Blade without Scarifiers	55-9893	249.99
Rear Disc Attachment	55-9894	389.99
Scraper Blade 48"	55-9895	279.99

¹ For ATVs with Front Quick Switch System already installed



SWISHER IMPLEMENT SYSTEMS FOR UTILITY VEHICLES

SWISHER QUICKSWITCH IMPLEMENT SYSTEM FOR UTILITY VEHICLES

- All you need is a mount, implement and lifting system
- Universal mounting kit accepts all 4 implements
- All implements are universal

Note: Nothing in this system will interchange with any other plow system

Description	P/N	Retail
Universal Mount Kit	55-9979	\$167.99
Universal Dump Bucket	55-9952	474.99
UTV Receiver 2x2 Polaris Ranger - Gen2	55-9946	139.99
UTV Receiver 2x2 John Deere Gator	55-9945	139.99
UTV Receiver 2x2 Kawasaki Mule - 500 series	55-9944	139.99
UTV Receiver 2x2 Yamaha Rhino	55-9922	139.99
UTV Receiver Kawasaki 610	55-9861	139.99
UTV Receiver Teryx 750	55-9860	139.99
UTV Receiver Polaris RZR800/LE/RZRS	55-9857	139.99



UNIVERSAL DUMP BUCKET

- Heavy-duty, designed for digging and moving modest weights of debris
- Constructed of reinforced 1/8" steel
- Easy user friendly attaching
- Quick release dump engagement
- Teeth are sold separately

55-9952 \$474.99

Optional Teeth

55-9866 \$62.99



UTV WINCH MOUNT

- Designed to fit into UTV 2" x 2" receiver
- Superwinch 1,200-3,500 lb. winch and Warn 2,000-4,000 lb. winch

55-9924 \$76.99



UNIVERSAL MOUNTING KIT

- Complete universal mounting system including winch mount, Receiver Step, and accessory attachment mount
- Designed for use with UTV winch (winch sold separately)
- Installs in minutes and provides easy, user friendly re-installation
- Single pin release for quick change of accessories
- Fits on UTV 2x2 receiver

55-9979 \$167.99



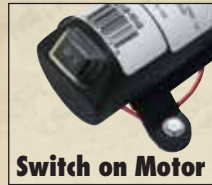
- SPORT BODY
- BILLET ALUMINUM
- UTILITY BODY
- SEATS & GRAPHICS
- CONTROL
- FUEL & AIR
- ELECTRICAL
- TIRES
- TIRE/WHEEL KITS
- WHEELS
- BRAKE
- BELTS, CHAINS & SPROCKETS
- DRIVE
- SUSPENSION
- BEARINGS
- EXHAUST
- HARD & SOFT LUGGAGE
- HUNTING
- AG & FARMING
- PLOW
- WINCH
- UTV
- ENGINE
- GENERAL ACCESSORIES
- RAMPS & TIEDOWNS
- CHEMICAL
- TOOLS & SUPPLIES
- DISPLAY & PROMO
- CROSS REFERENCE



**QUADBOSS
15 GALLON SPOT SPRAYER**

- 15 gallon poly tank with integrated drain
- 10' hose with spray wand and adjustable tip
- 1 gallon per minute SHURflo pump operates at 40 psi, manual switch integrated into pump
- Wand clips included
- Universal tiedown mounting (available separately) or may use integrated brass inserts for permanent mounting

Description	P/N	Retail
15 Gallon Spot Sprayer	56-5985	\$185.99
Wiring Kit (sold separately)	56-5986	32.99
Replacement Wand	56-5987	22.99



56-5942



**CYCLE COUNTRY™
STANDARD SPRAYERS**

- 1 GPM/45 PSI pump
- Economy hand wand
- 4 rubber feet
- Sump with strainer
- Switch harness
- Fused battery connector
- MSDS caution label

Description	P/N	Retail
25 Gallons	56-5946	\$185.99



**CYCLE COUNTRY™
STANDARD BOOM 43"**

- 120" spray swath
- 3 spray nozzles
- Check ball valves for drip-free usage

56-5822 \$99.99



56-6252



56-5947

**CYCLE COUNTRY™
PREMIUM SPRAYERS**

- Shurflo 2.1 GPM/100 PSI pump
- Boom compatible
- Recirculation valve
- Nylon tie-down straps
- "Trigger Jet" handwand
- Sump with strainer
- Switched harness
- Fused battery connector
- MSDS caution label
- For UTV and ATV usage

Description	P/N	Retail
15 Gallons	56-5942	\$275.99
25 Gallons	56-6252	305.99
45 Gallons	56-5947 ¹	350.99



**CYCLE COUNTRY™
BOOMLESS SPRAY BOOM**

- 24' swath
- 1 center nozzle
- Check ball valves for drip-free usage

56-5971 \$149.99



**CYCLE COUNTRY™
FOLDING BOOM 96"**

- Precision 120" swath
- 4 spray nozzles
- Check ball valves for drip-free usage

56-6253 \$249.99

- SPORT BODY
- BILLET ALUMINUM
- UTILITY BODY
- SEATS & GRAPHICS
- CONTROL
- FUEL & AIR
- ELECTRICAL
- TIRES
- TIRE/WHEEL KITS
- WHEELS
- BRAKE
- BELTS, CHAINS & SPROCKETS
- DRIVE
- SUSPENSION
- BEARINGS
- EXHAUST
- HARD & SOFT LUGGAGE
- HUNTING
- AG & FARMING
- PLOW
- WINCH
- UTV
- ENGINE
- GENERAL ACCESSORIES
- RAMPS & TIEDOWNS
- CHEMICAL
- TOOLS & SUPPLIES
- DISPLAY & PROMO
- CROSS REFERENCE

¹ For UTV and ATV Usage

SPREADERS & HITCHES



SWISHER SEEDER SPREADER

- Universal fit mounts easily to all makes of ATVs
- Spreads grass seed, fertilizer, salt or sand with consistency
- Adjustable spread widths from 4 to 16 feet in diameter
- Heavy-duty ball bearing motor
- Clear 1.5-gallon poly tank hopper, allows for an easy visual of contents
- 150 lbs capacity
- Shipping box 27"x15"x19"
- Weighs 50 lbs.

55-9925 \$269.99



SWISHER UTV/SUV TRUCK SPREADER

- Spreads grass seed, fertilizer, salt or sand with consistency
- Adjustable spread widths from 4-16 feet in diameter
- Heavy duty permanent magnet DC motor, for high torque applications
- Motor wiring included
- 8" easy fill spin-on cap with breather vents tank for consistent flow of product
- Universal fit - mounts easily to existing 2"x 2" receiver
- Easy installation - all hardware included
- Clear poly tank 25 gallon hopper, allows for an easy visual of contents
- 300 lbs. capacity

55-9935 \$414.99



CYCLE COUNTRY™ ATV SPREADER

- Improved funnel shape allows for smooth flow of materials
- Increased volume - 100 lb., 1.75 bushels, 14 gallons, over 3800 cubic inches
- Built of rugged molded plastic - will not rust or corrode
- Easy to use controls
- Mounts to front or rear rack quickly and easily
- Commercial grade

56-5931 \$449.99



See Push Tube Mounting Kits ON PAGE **905**

CYCLE COUNTRY™ TRAILER HITCH

- Made in USA to Cycle Country's high standards
- Heavy gauge powder-coated steel
- Includes all mounting hardware and instructions



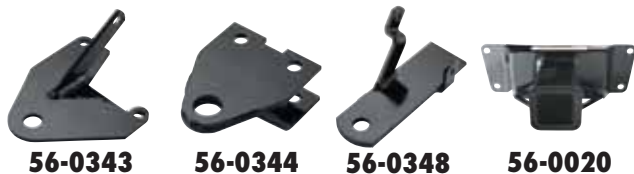
BOMBARDIER/CAN AM	Year	P/N	Retail
200 Rally 2x4	03-06	56-0334	\$38.99
500 Renegade H.O. EFI 4x4	2008	56-6461 ¹	38.99
800 Renegade EFI 4x4	07-09	56-6461 ¹	38.99
HONDA			
TRX250 Recon 2x4	97-08	56-0335	\$38.99
TRX250 EX 2x4	02-03	56-0335	38.99
TRX250TE Recon ES	03-04	56-0335	38.99
TRX650 Rincon 4x4	03-05	56-0338	38.99
TRX680 Rincon Auto EFI	06-11	56-0338	38.99
KAWASAKI			
Mule 610 4x4	05-10	56-6404	\$38.99
Mule 610XC 4x4	2010	56-6404	38.99

KYMCO	Year	P/N	Retail
MXU250	2005	56-0376	\$34.99
MXU300	2006	56-0376	34.99
MXU500	2007, 10-11	56-0376	34.99
POLARIS			
P200 Phoenix 2x4	2005	56-0375	\$38.99
P200 Saw Tooth 2x4	2006	56-0375	38.99
P250 Trailblazer	94-95, 97-05	56-6403	38.99
P400 Trailblazer	2003	56-6403	38.99
P500 Scrambler 4x4	98-05	56-6403	38.99
SUZUKI			
LT-F250 Ozark 2x4	02-06	56-0333	\$38.99
YAMAHA			
YFM350 Wolverine 4x4	05 & Older	56-0339	\$38.99
YFM450 Wolverine 4x4	06-07	56-6416	38.99

¹ Drop pin style

- SPORT BODY
- BILLET ALUMINUM
- UTILITY BODY
- SEATS & GRAPHICS
- CONTROL
- FUEL & AIR
- ELECTRICAL
- TIRES
- TIRE/WHEEL KITS
- WHEELS
- BRAKE
- BELTS, CHAINS & SPROCKETS
- DRIVE
- SUSPENSION
- BEARINGS
- EXHAUST
- HARD & SOFT LUGGAGE
- HUNTING
- AG & FARMING
- PLOW
- WINCH
- UTV
- ENGINE
- GENERAL ACCESSORIES
- RAMPS & TIEDOWNS
- CHEMICAL
- TOOLS & SUPPLIES
- DISPLAY & PROMO
- CROSS REFERENCE

- SPORT BODY
- BILLET ALUMINUM
- UTILITY BODY
- SEATS & GRAPHICS
- CONTROL
- FUEL & AIR
- ELECTRICAL
- TIRES
- TIRE/WHEEL KITS
- WHEELS
- BRAKE
- BELTS, CHAINS & SPROCKETS
- DRIVE
- SUSPENSION
- BEARINGS
- EXHAUST
- HARD & SOFT LUGGAGE
- HUNTING
- AG & FARMING
- PLOW
- WINCH
- UTV
- ENGINE
- GENERAL ACCESSORIES
- RAMPS & TIEDOWNS
- CHEMICAL
- TOOLS & SUPPLIES
- DISPLAY & PROMO
- CROSS REFERENCE



QUADBOSS TRAILER HITCH

- Heavy-duty 1/4" steel and powder-coated for durability
- Fixture welded for precise fit
- Mounting hardware and instructions included

ARCTIC CAT	Year	P/N	Retail
DVX400	2004	56-0345	\$38.99

CAN-AM	Year	P/N	Retail
DS250	06-08	56-1318	\$38.99

HONDA	Year	P/N	Retail
TRX250 Recon	97-11	56-0343	\$38.99
TRX250EX	01-11	56-0357	38.99
TRX250X	87-92	56-0356	38.99
TRX300EX	93-07	56-0356	38.99
TRX650 Rincon	03-05	56-0344	38.99
TRX680 Rincon	06-11	56-0344	38.99

KAWASAKI	Year	P/N	Retail
KFX400	03-06	56-0345	\$38.99
KVF650 Prairie 4x4	02-03	56-0399	54.99
KFX700 2x4	04-09	56-0399	54.99

POLARIS	Year	P/N	Retail
Scrambler, Sport, Trailblazer (chain drive models)	96-09	56-0349	\$38.99

SUZUKI	Year	P/N	Retail
LT-Z250	04-06	56-0369	\$38.99
LT-F250 Ozark	02-06	56-0369	38.99
LT-Z400	04-07	56-0345	38.99

YAMAHA	Year	P/N	Retail
YFA1 125 Breeze	89-03	56-1260	\$45.99
125 Grizzly 2x4	05-09	56-1260	45.99
YFM350 Raptor	04-07	56-0359	38.99
YFM350 Wolverine	95-05	56-0348	38.99
350 Wolverine 4x4	06-07	56-0377	38.99
YFM350 Warrior	89-03	56-0359	38.99
450 Wolverine 4x4	06-09	56-0377	38.99
YFM600 Grizzly	99-01	56-0367	38.99



SWISHER TWIST & PULL

- Designed to provide a simple and secure location to attach chains or tow ropes
- Simply goes over existing ball hitch

55-9930 \$13.99



HITCHES



QUADBOSS 2" RECEIVER HITCH

CAN-AM	Year	P/N	Retail
Renegade 500/800	07-10	56-0021	\$79.99
Outlander (All)	06-11	56-0021	79.99

HONDA	Year	P/N	Retail
TRX420 Rancher (Straight Axle)	07-11	57-4336	\$79.99
TRX420 Rancher (Ind. Susp.)	09-11	56-0023	79.99
TRX Rincon 650/680	05-11	56-0022	79.99

KAWASAKI	Year	P/N	Retail
Mule 610	05-11	56-0368	\$67.99
Brute Force 650i/750i (Ind. Susp.)	06-11	56-0024	79.99

POLARIS	Year	P/N	Retail
Sportsman 550/850 XP	2009	56-0026	\$79.99
All Sportsman w/Ind. Susp. (Exc. XP)	03-11	56-0025	79.99
RZR 800/RZR-S	08-11	56-0020	79.99

SUZUKI	Year	P/N	Retail
King Quad 450/750 AXI	05-11	56-0027	\$79.99

YAMAHA	Year	P/N	Retail
Grizzly 450 IRS	2011	56-0029	\$79.99
Grizzly/Big Bear 350/400 IRS	08-11	56-0029	79.99
Grizzly 550	09-11	56-0028	79.99
Grizzly 700	07-11	56-0028	79.99



QUADBOSS 3 WAY HITCH ADAPTER

- Use with a trailer ball, a pin hitch or a tow strap
- Allows both the use of a ball hitch and a pin hitch
- Welded tow ring for use with tow straps and chains
- Install in the down position to lower your hitch height by 2" or reverse to raise your hitch height
- Works with trailer balls that have 3/4" shank
- Powder-coated steel
- 1 year limited warranty

56-6758 \$30.99



QUADBOSS HITCH CONVERSION KIT

- Converts Ohio Steel ATV carts from pin hitch to a ball hitch
- Comes complete with necessary hardware to bolt to cart drawbar
- Drilling may be necessary to fit other brands of carts
- Fits 1-7/8" trailer ball (coupler included)
- 1 year limited warranty

56-6757 \$40.99



KOLPIN® ATV 2" IRS RECEIVER HITCH

- Frame mounted
- Long lasting powder coat finish for ground engaging and heavy towing capabilities
- For offroad use only



57-8418



57-8522



57-8515



57-8555



57-8521



57-8531

Description		P/N	Retail
Universal	Fits most ATV models with independent rear suspension	57-8418	\$80.99
Can-Am Outlander	All ATV models	57-8515	92.99
Honda Rancher AT	Independent suspension models	57-8555	80.99
Polaris X2/Touring	2009 models	57-8522	92.99
Polaris Sportsman XP	2009 models	57-8521	92.99
Polaris Sportsman XP	10-11 models	57-8531	91.99

KOLPIN® ATV 2" SWINGMAN RECEIVER HITCH

- Frame mounted
- Long lasting powder coat finish for ground engaging and heavy towing capabilities
- For offroad use only



57-8419



57-8514

Description		P/N	Retail
Honda Forman	Fits most with twin shocks	57-8419	\$80.99
Honda Rancher	Fits most with single shock	57-8514	80.99
Kawasaki Prairie/Bayou	Fits most non-independent rear suspension ATV models 02-Up	57-8420	80.99
Suzuki Eiger/Vinson	Fits most ATV models with straight axle	57-8421	80.99



57-8420



57-8421

KOLPIN® MULTI-HITCH 3-Way Multi-Hitch

- Unique design enable dual towing capability with the ball mount or pin mount
- Side loops for tie down, tow straps or safety chain attachment
- Durable powder coat finish for long life
- 3/4" hitch ball mounting hole
- For offroad use only

Bolt On 3-Way Hitch

- Three easy mounting options; ball (sold separately), clevis and tow hook mount
- Not recommended for use with Kolpin Dirtworks 3-Point Hitch Systems
- 3/4" hitch ball mounting hole
- For offroad use only

Bolt On ATV Receiver

- Unique design enables dual towing capability with the ball mount or pin mount
- Heavy-duty 2" receiver mount for additional ball mount inserts
- Reversible for trailer hitch height adjustment
- 3/4" hitch ball mounting hole
- For offroad use only



37-5595



37-5596



37-5598



37-5599

Description		P/N	Retail
3-Way 1-1/4" Multi-Hitch	Heavy-Duty drawbar fits 1-1/4" receiver hitches	37-5595	\$36.99
3-Way 2" Multi-Hitch	Heavy-Duty drawbar fits 2" receiver hitches	37-5596	36.99
Bolt On 3-Way Hitch	For 3/4" shaft trailer ball (sold separately)	37-5598	34.99
Bolt On ATV Receiver Hitch	Fits most ATV models with factory hitch for 3/4" shaft trailer ball (sold separately)	37-5599	63.99



- SPORT BODY
- BILLET ALUMINUM
- UTILITY BODY
- SEATS & GRAPHICS
- CONTROL
- FUEL & AIR
- ELECTRICAL
- TIRES
- TIRE/WHEEL KITS
- WHEELS
- BRAKE
- BELTS, CHAINS & SPROCKETS
- DRIVE
- SUSPENSION
- BEARINGS
- EXHAUST
- HARD & SOFT LUGGAGE
- HUNTING
- AG & FARMING
- PLOW
- WINCH
- UTV
- ENGINE
- GENERAL ACCESSORIES
- RAMPS & TIEDOWNS
- CHEMICAL
- TOOLS & SUPPLIES
- DISPLAY & PROMO
- CROSS REFERENCE